

**Student Theatre Company**  
Autumn/Winter Season  
2023



EST 1892 **LSBU**



# Contents

**4**  
**LSBU Student  
Theatre Company**



Welcome to the LSBU Student Theatre Company's 2023 Autumn/Winter season.

**5**  
**About the course**



Everything you need to know about our Acting and Performance course.

**6**  
**The Permanent Way**



By David Hare.  
Directed by Nicky Allpress.

**8**  
**Enron**



By Lucy Prebble.  
Directed by Max Harrison.

**10**  
**Love and Money**



By Dennis Kelly.  
Directed by Hal Chambers.

**12**  
**Frantic Assembly**



Frantic Assembly presents a season of four new works devised in collaboration with the LSBU Student Theatre Company.

**14**  
**Calendar**



A quick guide to the season.

# LSBU Student Theatre Company

## Welcome to the LSBU Student Theatre Company's 2023 Autumn/Winter season

---

The London South Bank University Student Theatre Company is delighted to be welcoming audiences back into our spaces again. We will be working with our professional partners to deliver another diverse season of established plays and originally devised material. The year 2023 has been extraordinarily pressured for many, with the country grappling with the cost-of-living crisis. This year's plays, performed by the LSBU Student Theatre Company, have been programmed in response to our current times. A selection of

contemporary pieces each exploring the pertinent themes of materialism, ownership, and the murky relationship between money and power. The season begins with *The Permanent Way* by David Hare, directed by Nicky Allpress. This is followed by *Enron* by Lucy Prebble, directed by Max Harrison. Our final play is Dennis Kelly's *Love and Money* directed by Hal Chambers. We are delighted that we continue to grow our long-standing relationship with our company-in-residence Frantic

Assembly. With their signature creative and integrative approach to movement and text, they will be collaboratively devising material for a new composition with our performers-in-training.

**Alex Deacon**  
Producer

# Course information

---

BA Acting and Performance at LSBU offers acting and performance training in the heart of London's theatre quarter, combining the best of the conservatoire with an enriching University experience. At LSBU we are confident that we offer a challenging, exciting and above all, transformative opportunity to study, learn and train with industry professionals. Uniquely, you will be taught by theatre directors, actors, performers and guest companies, who understand the demands on young people making

their way in a competitive industry. Networking with the profession is built into the course and many of our former students are now successful practitioners and artists. Check out the latest BBC III hit comedy *Threesomes*, written and performed by LSBU graduate, Soph Galustian. Located in the heart of London's cultural quarter, LSBU is the ideal place for you to study and grow as a creative actor and theatre maker with many of the world's greatest theatres within a fifteen-minute walk. You can take advantage of this proximity by attending professional

workshops, gaining temporary employment, and answering casting calls to the Drama department. Entrance to our highly competitive BA course is primarily based on a successful two-stage audition process. In addition, you will be required to achieve at least 112 UCAS points in Drama, Theatre or Performing Arts.

# The Permanent Way

By David Hare.  
Directed by Nicky Allpress.

Thursday 19 October, 7pm  
Friday 20 October, 7pm

**Ticket prices: £10**

**Concession rate for LSBU Students: £5**

The Edric Theatre, Borough Road.

Tickets and info available from  
[edrictheatre.com](http://edrictheatre.com) or tel: 020 7815 8398

---

Nicky is a director with a passion for telling stories, new, old, classical, and contemporary. She is a member of the Young Vic Creator's Programme and Stage Director's UK. As Director: *Crackers* (Polka Theatre), *The Walworth Farce* (Southwark Playhouse Elephant), *Romeo and Juliet* (Southwark Playhouse Borough), *Maddie* (Arcola Outside) *Oh! What A Lovely War* (Touring).

*The Permanent Way* is a powerful play that explores the human cost of railway privatisation in the UK. Based on real-life testimonies, the play offers a poignant and thought-provoking insight into the impact of political decisions on ordinary people's lives. This play is a must-see for anyone interested in the intersection of politics and society.



# Enron

By Lucy Prebble.  
Directed by Max Harrison.

Thursday 2 November, 7pm  
Friday 3 November, 7pm

**Ticket prices: £10**

**Concession rate for LSBU Students: £5**

The Edric Theatre, Borough Road.

Tickets and info available from  
[edrictheatre.com](http://edrictheatre.com) or tel: 020 7815 8398

---

Max is a freelance theatre director and Co-Artistic Director of Lidless Theatre. After training as an actor at LAMDA he was mentored by Mike Alfred's and, recently assisted him on *Five Characters in Search of a Good Night's Sleep* (Southwark Playhouse). He is interested in process-orientated rehearsals that centre around the actor's creativity and imagination. Professional directing credits include *Leaves of Glass* (Park Theatre), *Tender Napalm* (King's Head Theatre), *Moonfleece*, (Pleasance Theatre), *In Place of Fear* (Pleasance Theatre), and *Little Pieces of Gold* (Southwark Playhouse).

*Enron* is a gripping play that tells the story of one of the biggest corporate scandals in history. Based on true events, the play follows the rise and fall of the energy company *Enron*, and the greed and corruption that led to its downfall. With dynamic characters and intense drama, *Enron* explores themes of power, ambition, and morality. This thought-provoking play challenges audiences to question the ethics of big business and the impact it has on society.



# Love and Money

By Dennis Kelly.  
Directed by Hal Chambers.

Thursday 30 November, 7pm  
Friday 1 December, 7pm

**Ticket prices: £10**

**Concession rate for LSBU Students: £5**

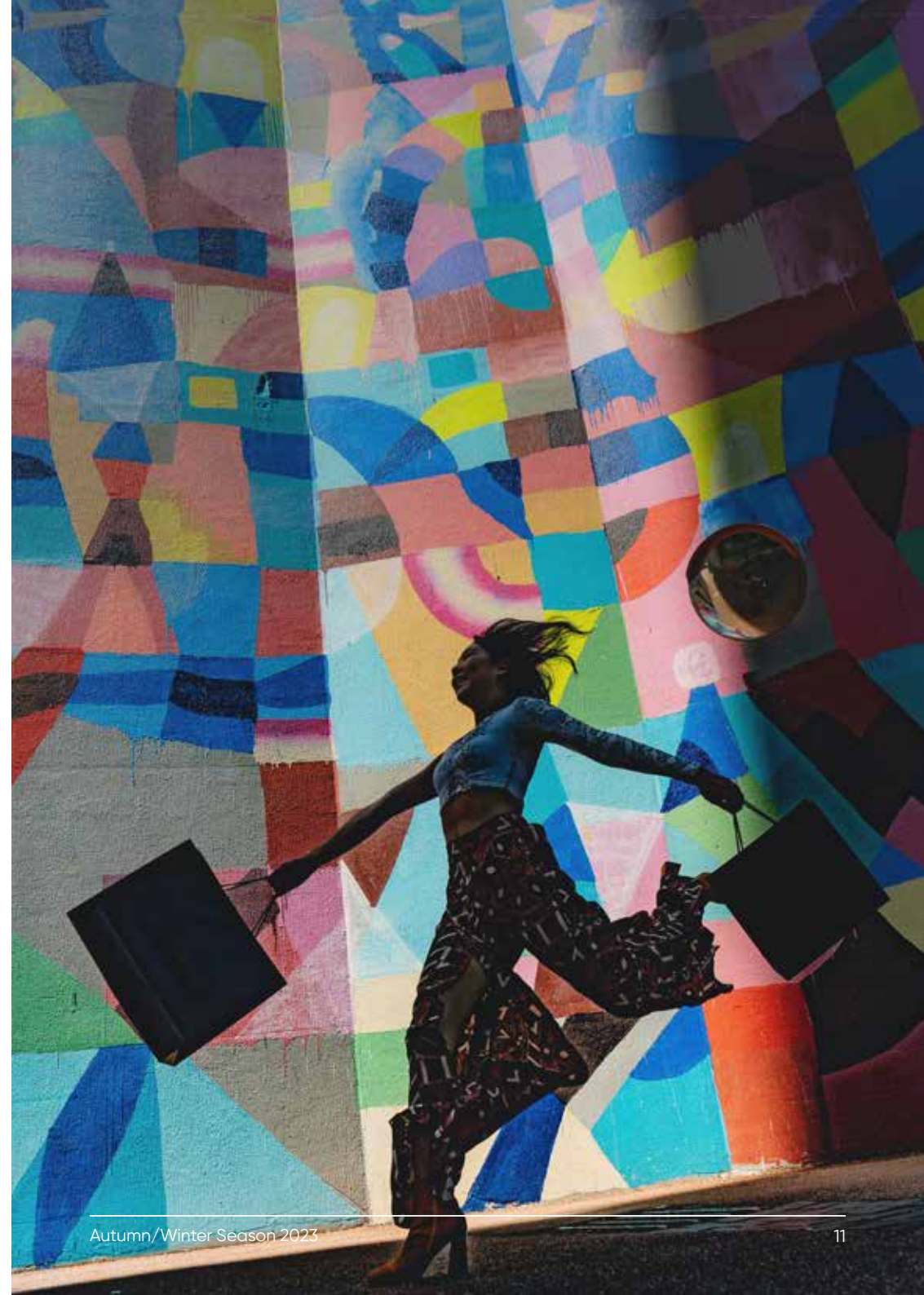
The Edric Theatre, Borough Road.

Tickets and info available from  
[edrictheatre.com](http://edrictheatre.com) or tel: 020 7815 8398

---

Hal is an award-winning director based in South London. He has a passion for making theatre with an epic swirl, powered by bold movement, a love of music, and a tangible sense of spirit. He has directed work around the UK, for the likes of Theatre by the Lake, Hull Truck, RADA, Rabble Theatre - Reading, Stephen Joseph Theatre Scarborough, York Theatre Royal, Eastern Angles, Polka Theatre, and The Barn Theatre Cirencester. He recently spent two years working with the Royal Shakespeare Company.

*Love and Money* is a darkly comedic play that explores the destructive power of money on relationships. The story follows the lives of David and Jess, a couple whose financial struggles lead them down a dangerous path. As they become increasingly desperate, they resort to drastic measures that have devastating consequences.



# Frantic Assembly

## Company in residence

Friday 13 October, 5pm  
Friday 10 November, 5pm  
Friday 8 December, 5pm

The Edric Theatre, Borough Road  
Free of charge but tickets need to be reserved in advance by emailing [edrictheatre@lsbu.ac.uk](mailto:edrictheatre@lsbu.ac.uk)

---

Frantic Assembly presents a season of three new works devised in collaboration with the LSBU Student Theatre Company.

Vivid and dynamic, Frantic Assembly's unique physical style combines movement, design, music and text. In addition to its productions Frantic Assembly operates an extensive Learn & Train programme introducing thousands of participants each year to the company's process of creating theatre.

The company attracts new and young audiences with work that reflects contemporary culture.

Frantic Assembly are thrilled to be continuing their close working relationship with students at London South Bank University.

This autumn, all Acting and Performance students will work with members of Frantic Assembly in a series of three original performances, each created over five days during an intensive, creative residency.

We don't know what the pieces will be about yet, as we haven't started making them, but you can be sure to see some thrilling, energetic and unforgettable theatre! Each residency will be directed by two Frantic Assembly practitioners.



# Calendar

## Autumn/Winter season

All events must be booked  
in advance

---

### October

#### **Frantic Assembly**

Friday 13 October, 5pm  
*Edric Theatre*

#### **Permanent Way**

Thursday 19 October, 7pm  
Friday 20 October, 7pm  
*Edric Theatre*

### November

#### **Enron**

Thursday 2 November, 7pm  
Friday 3 November, 7pm  
*Edric Theatre*

#### **Frantic Assembly**

Friday 10 November, 5pm  
*Edric Theatre*

#### **Love and Money**

Thursday 30 November, 7pm  
*Edric Theatre*

### December

#### **Love and Money**

Friday 1 December, 7pm  
*Edric Theatre*

#### **Frantic Assembly**

Friday 8 December, 5pm  
*Edric Theatre*





